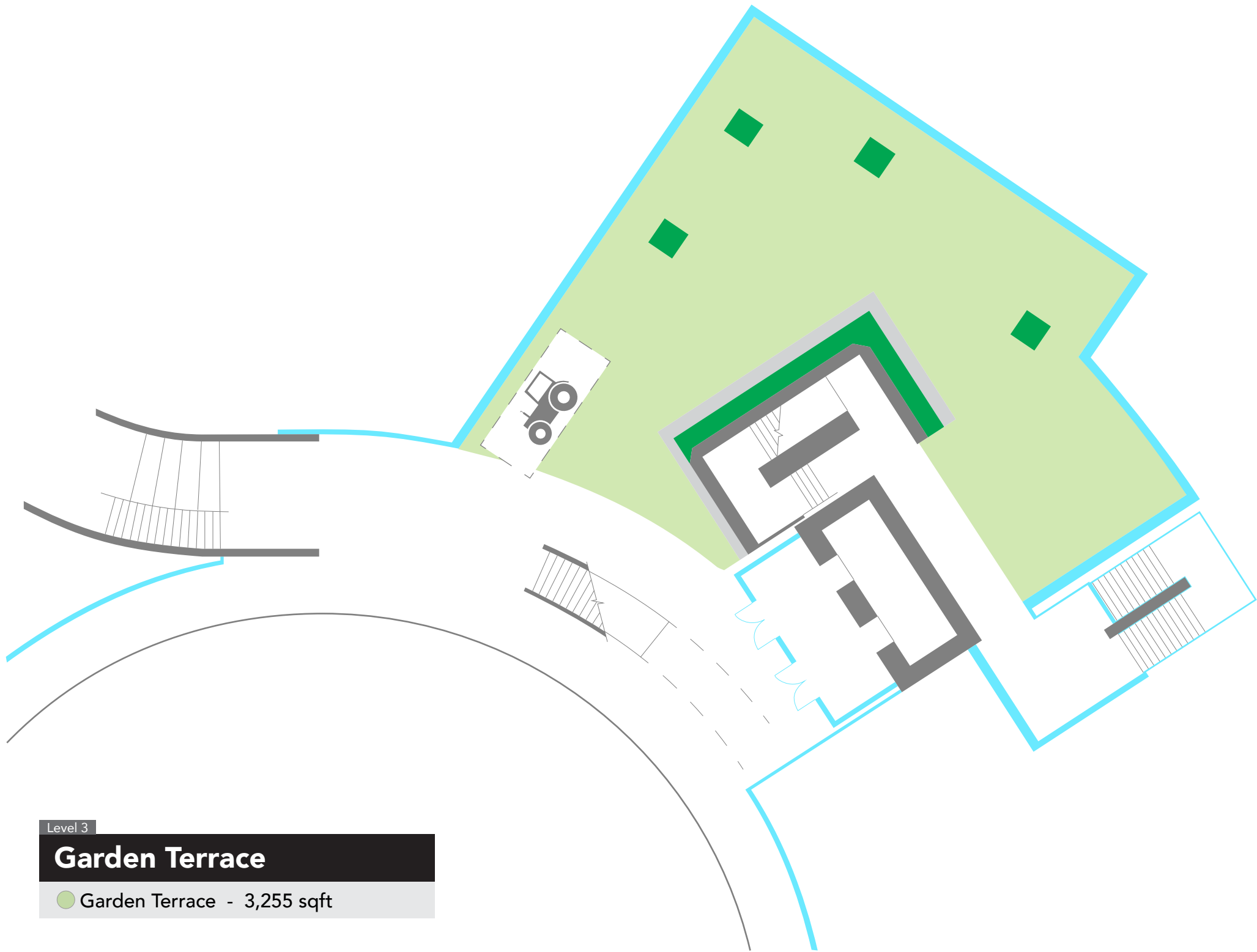


Level 1

Share Studio & Lobby

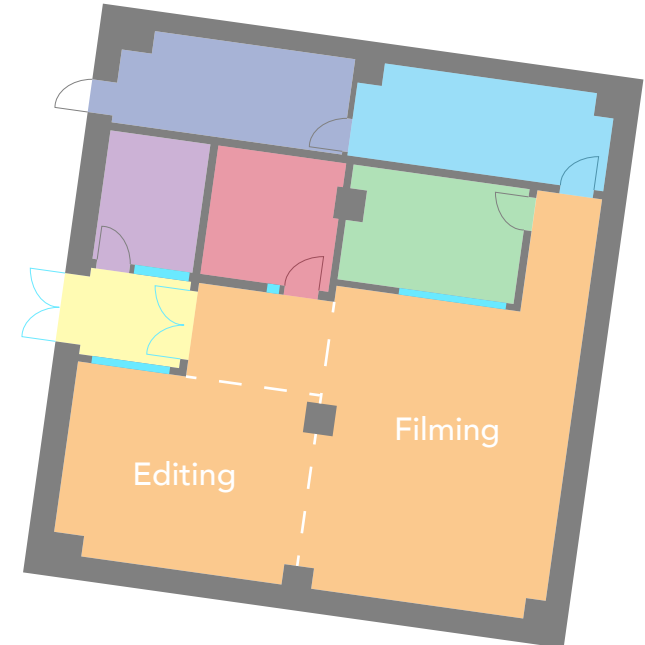
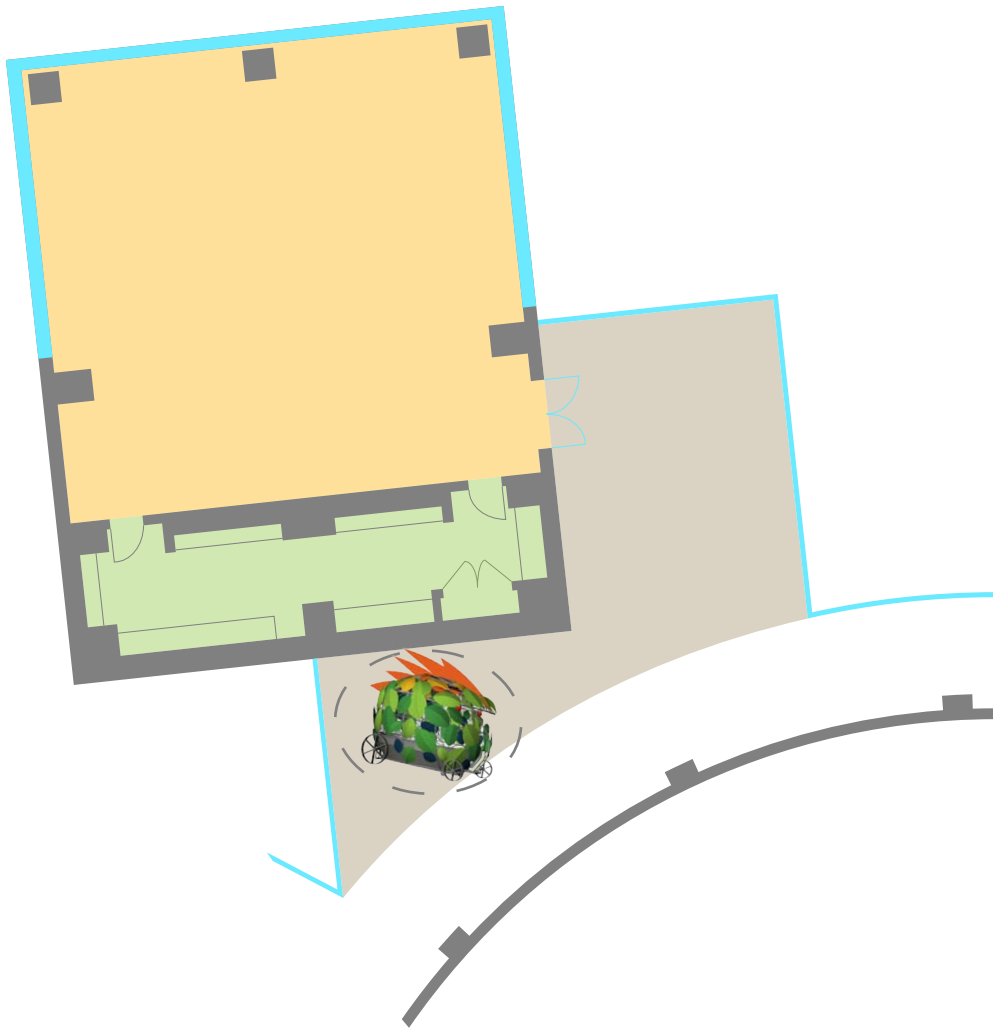
- Share Studio - 1,370 sqft
- └ Seating - 920 sqft
- Lobby - 2,870 sqft



Level 3

Garden Terrace

● Garden Terrace - 3,255 sqft



Level 4

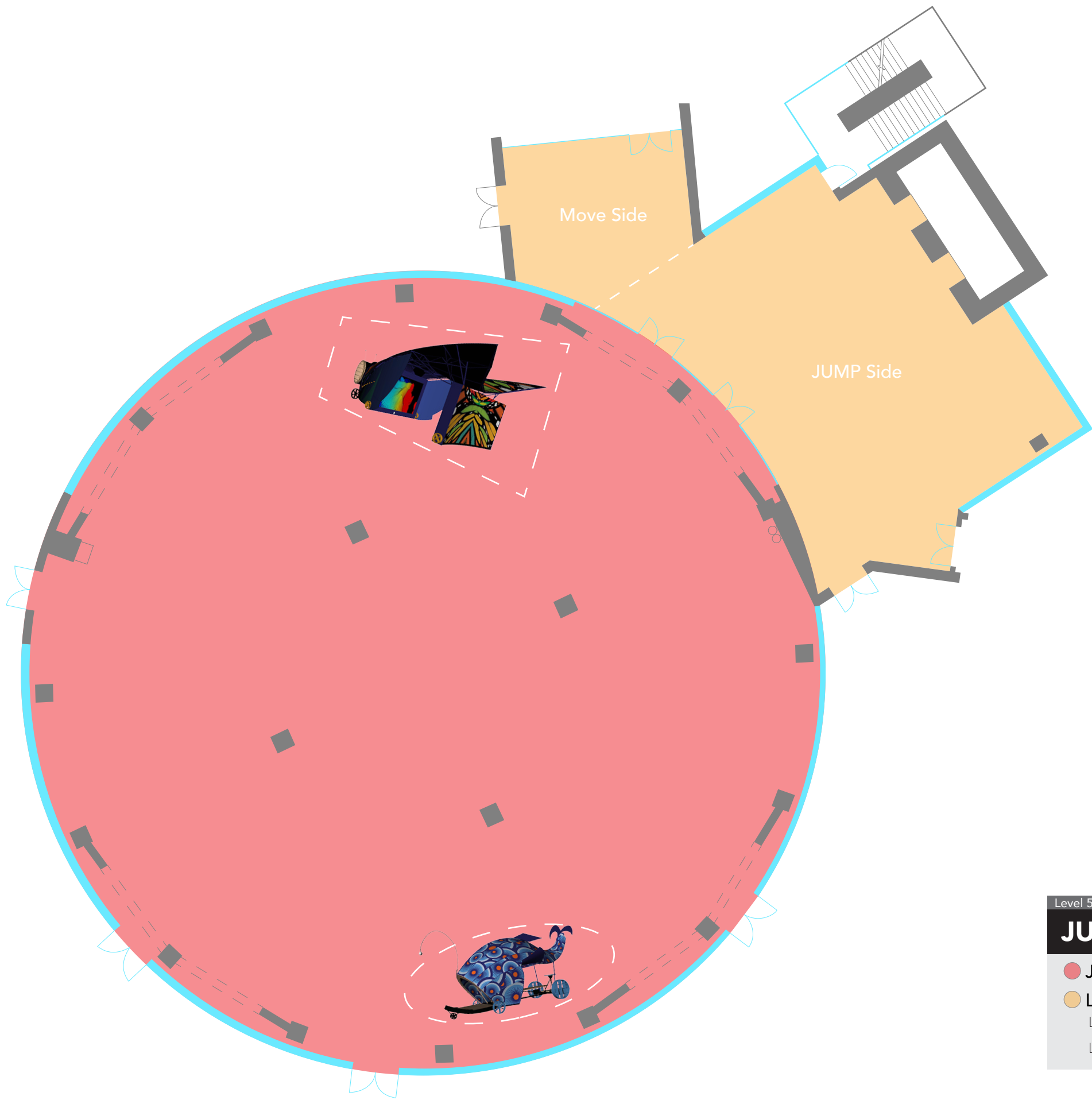
Inspire Studio

- Inspire Studio - 1,350 sqft
- Support - 230 sqft
- Terrace - 685 sqft

Level 4

Play Studio

- Play Studio - 920 sqft
 - └ Editing - 290 sqft
 - └ Filming - 550 sqft
- Audio - 90 sqft
- Control - 120 sqft
- Office - 110 sqft
- E Storage - 160 sqft
- W Storage - 140 sqft
- Vestibule - 60 sqft



Level 5

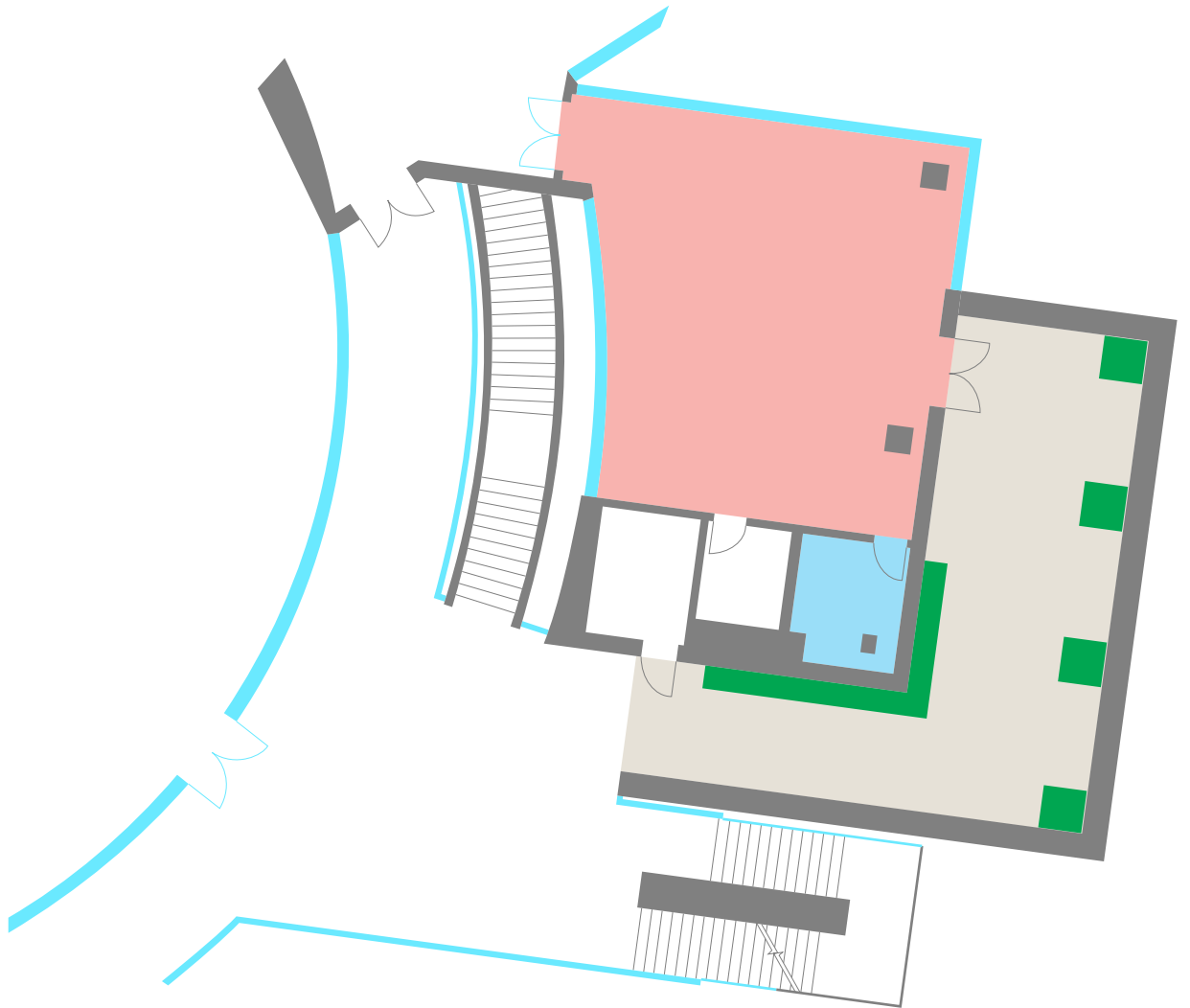
JUMP Room

- JUMP Room - 8,230 sqft
- Lobby - 2,480 sqft
 - └ JUMP Side - 1,970 sqft
 - └ Move Side - 510 sqft

Level 5

The Loft

- The Loft - 970 sqft
- Loft Storage - 75 sqft
- Loft Terrace - 775 sqft

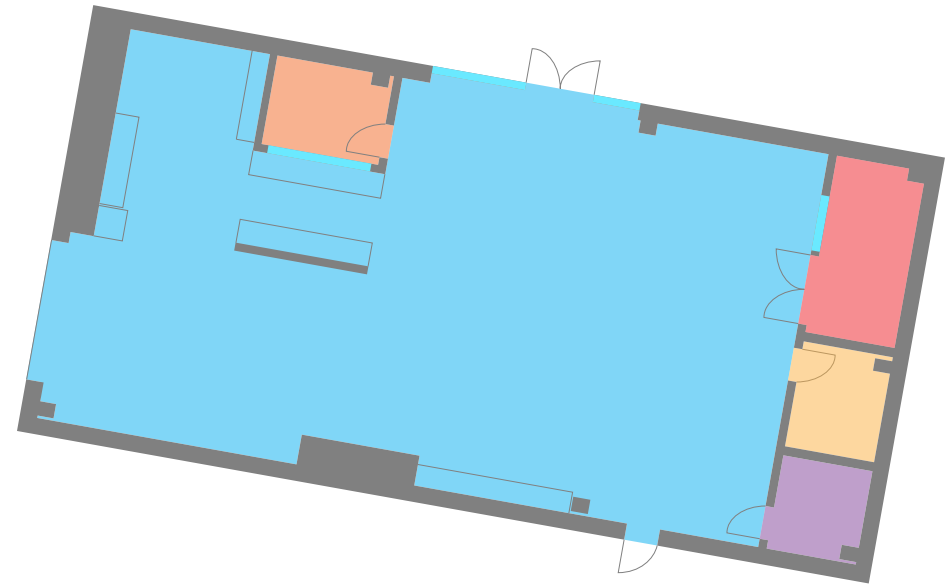




Level 5

Move Studio

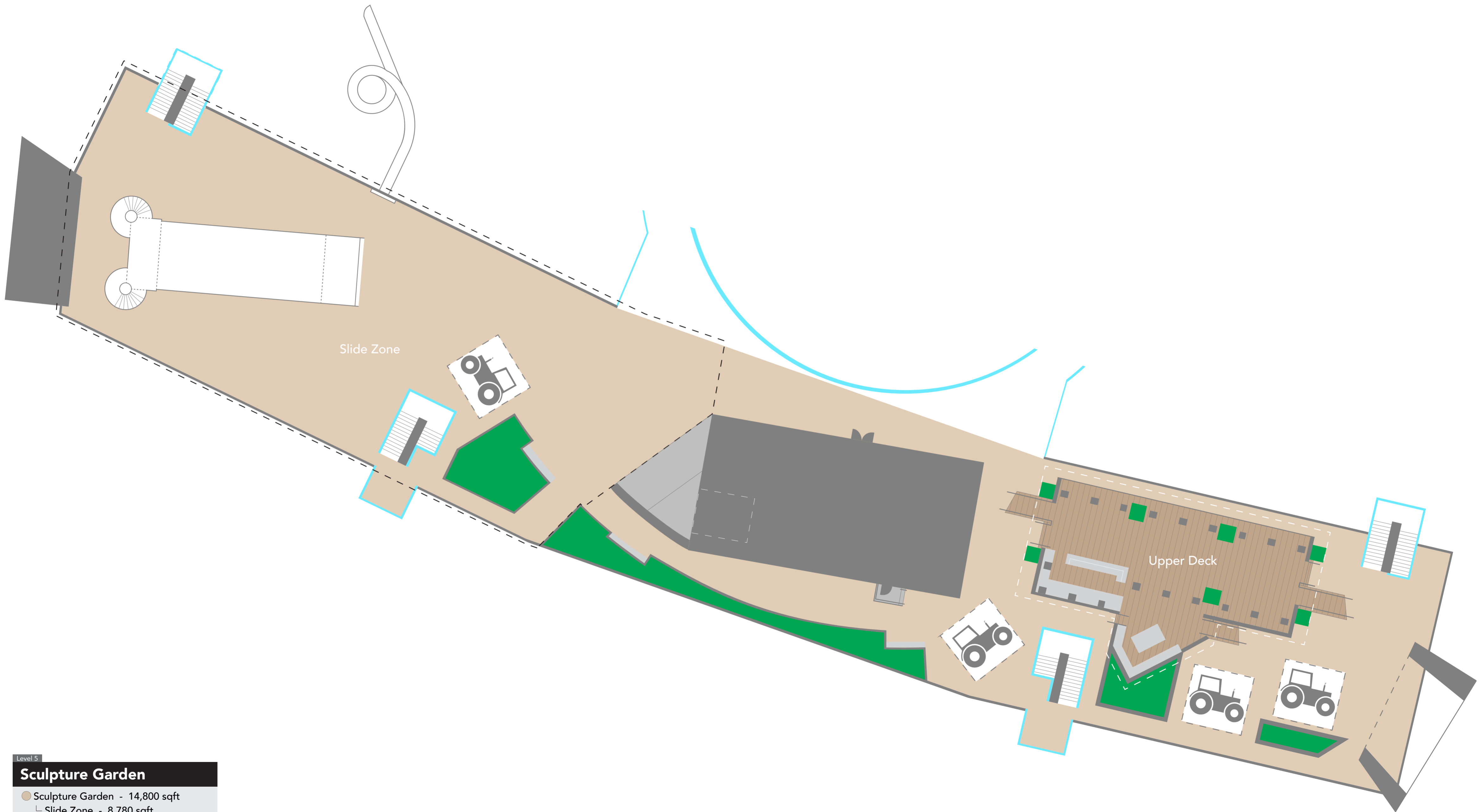
- Move Studio - 1,530 sqft
- Waiting/Hallway - 400 sqft
- East Dressing - 75 sqft
- West Dressing - 65 sqft



Level 5

Make Studio

- Make Studio - 1,500 sqft
- Office - 65 sqft
- Laser Room - 115 sqft
- Spray Booth - 60 sqft
- Kiln - 55 sqft



Level 5

Sculpture Garden

- Sculpture Garden - 14,800 sqft
- └ Slide Zone - 8,780 sqft
- └ Upper Deck - 1,750 sqft

Level 6

Pioneer Room

- Lobby - 3,790 sqft
 - └ Main Lobby - 1,925 sqft
 - └ Overflow Lobby - 835 sqft
 - └ Gallery - 1,030 sqft
- Pioneer Room - 6,865 sqft
- Catering Kitchen - 660 sqft
- N Terrace - 595 sqft
- S Terrace & Walkway - 2,475 sqft
 - └ S Terrace - 750 sqft

